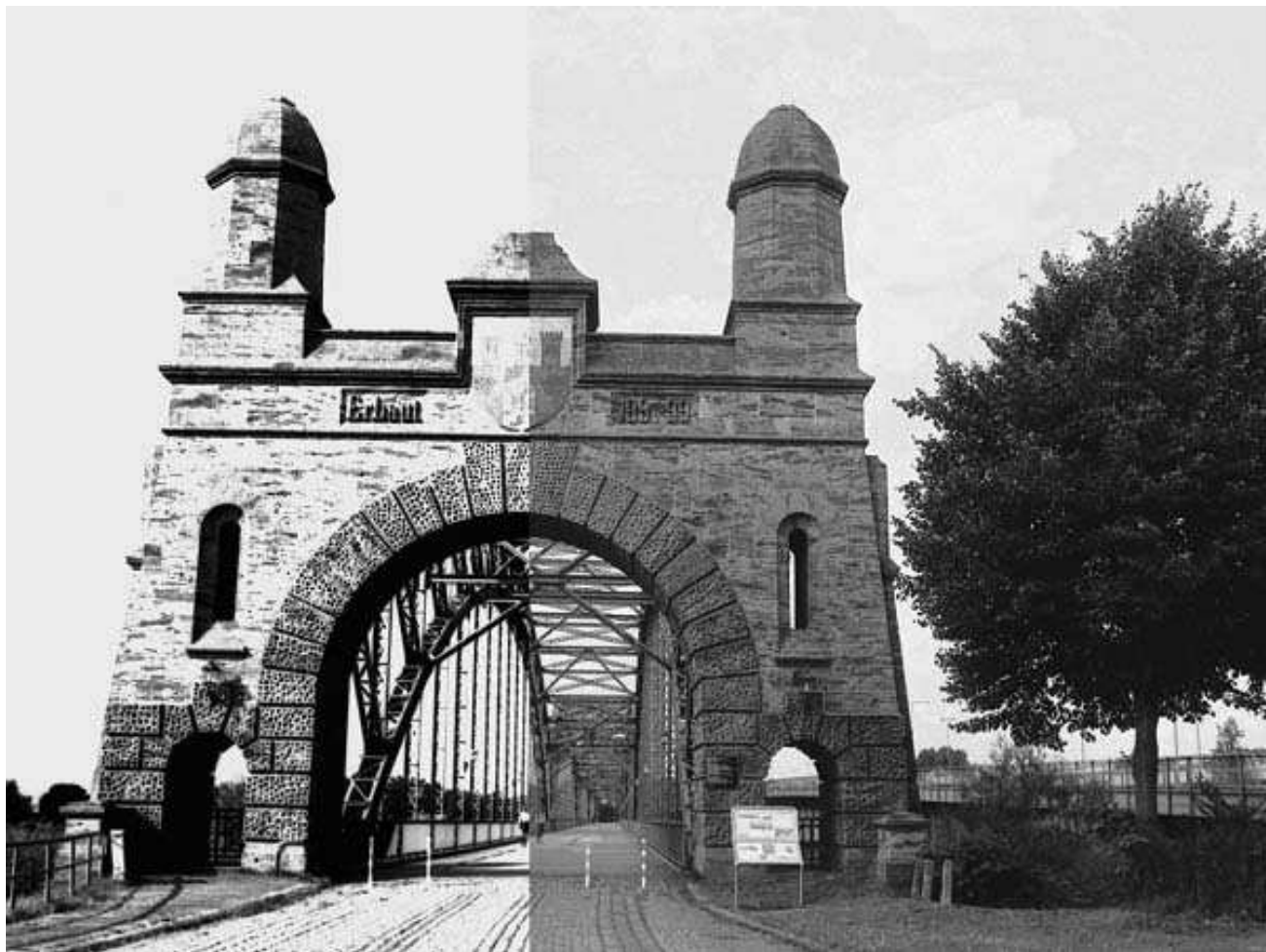


INNOVATIVE - CREATIVE



Rollei

**Technical Pan
ATP-“V1”**

Low-sensitive B&W film with extremely fine grain
and controllable contrast.



The **ROLLEI ATP "V1"** is an extremely high resolution B&W film. He has a nominal sensitivity of ISO 32/16°. He draws by finest grain, high sharpness and contrast variability out, by the choice of appropriate developers. The **ROLLEI ATP "V1"** can be used, both for the pictorial photography, and also as document film for reproductions, letters or title slides, in the photo micrography, solar photography, and with the employment of "photographic electrophoretic gels, and laser recording. The ability to steer the contrast of the film, lastingly looks for itself on the film market.

Picture examples:



Here, the ROLLEI ATP "V1" became processed in the ROLLEI LOW CONTRAST (RLC) developer. To recognize clearly, are the extremely sharp redition of the smallest details, and the abundance of tonality values. For the normal pictorial photography (please regard the formation of clouds, this is an impressive example for an "flattened" gradation).

Data:

Processed in ROLLEI RLC, 1+4, 6 minutes, with 20°C.

It may be, that the dilution for some requirements is too "fat", therefore attempts with 1+5 and 1+6, should take place.



Here, the ROLLEI ATP "V1" became processed in the ROLLEI HIGH SPEED (RHS) with an clearly higher contrast. Therefore, this developer is not suitable for the normal pictorial photography. In order to arrange particulaly expression-strong images, this combination would be, however, optimal!

Data:

Processed in ROLLEI RHS, 1+7, 5 minutes, with 20°C.



Here, the ROLLEI ATP "V1" became processed in ROLLEI HIGH CONTRAST (RHC). Thereby, the hard contrast is very clear. This combination, is absolutely unsuitable for the pictorial photography. However, a outstanding possibility itself, to operate "figuratively"

Data:

Processed in ROLLEI HIGH CONTRAST (RHC), 1+7, 6 minutes, 20°C.

Characteristics:

- low sensitive, very highly solvent superpanchromatic film;
- very good resolving power, extremely fine grain, and very high sharpness;
- special coating for the improvement of the film transportation characteristics in the camera.
- polyester film layer with high anti-breaking and ultimative tensile strength;
- archive stable LE500 (live expectancy 500 years, examined by the Rochester Institute of Technology, Rochester, USA);
- No-curling coating for the improvement of the film flatness;
- Anti-Newton-coating against the development of Newton rings;
- the film can be used with daylight and electronic flash lights;
- the film behaves before and after the development anti-statical;
- spectrale sensitivity from 370 to 700nm;
- accurate, tear-firm, transparent P.E.T. film layer;
- owing to its highly transparent film layer, very well suitable for scanning and slide projection;
- owing to its highly transparent film layer, very well suitable for reversal processing (AGFA Scala process).

Film layer structure:

- glass clear P.E.T. layer: 100 micron
- emulsion coating: emulsion layer with super coating
- film back side: anti-static coating and anti-Newton coating

Resolving power: 300 Lp/mm at a contrast of 1,6:1, corresponds to approx. 900 Lp/mm at 1,000:1

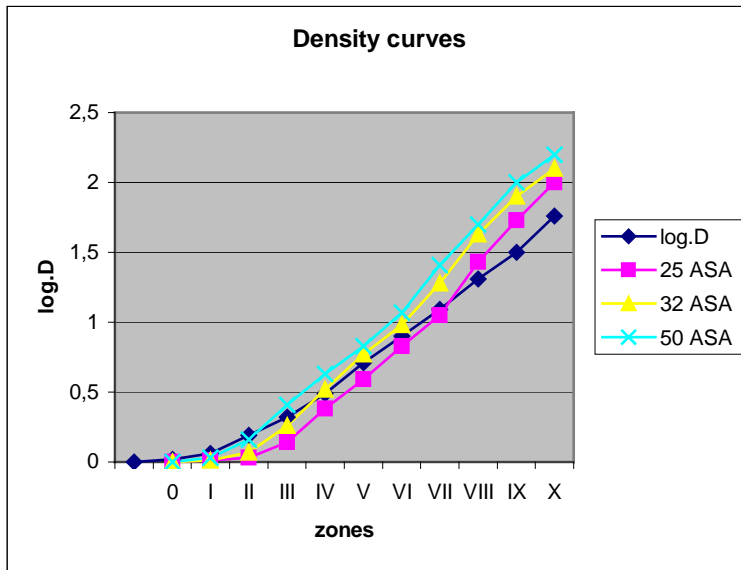
Emulsion layer thickness: 4 micron

Exposure index: ISO 32 / 16 DIN / daylight

Characteristics: spectrale sensitivity from 360 to 700 nm

Density curve:

Processed in ROLLEI Low Contrast (RLC), 1+4, 6 minutes, with 20°C. Tip interval: first 30 sec. permanent, then all 30 sec. 5 times



Zone	log.D	25 ASA	32 ASA	50 ASA
	reference			
0	0,02	0	0	0
I	0,06	0,01	0,01	0,03
II	0,19	0,03	0,07	0,16
III	0,32	0,14	0,26	0,41
IV	0,49	0,38	0,52	0,63
V	0,71	0,59	0,77	0,83
VI	0,9	0,83	0,98	1,07
VII	1,09	1,05	1,28	1,41
VIII	1,31	1,43	1,63	1,7
IX	1,5	1,73	1,9	2
X	1,76	2	2,1	2,2

©Frank Bauchspiess, results of the practice test, September 2007. We thank Mr. Bauchspiess for the kindly provided data.

- Film storage:** It is recommended not to expose the film into direct sun light, strong heat or high air humidity.
 unexposed film: idea are 13°C, with longer storage 8°C (refrigerator).
 exposed film: after exposure process as soon as possible, keep cool as possible.

Film processing: The ROLLEI ATP "V1" is to be processed, because of its superpanchromatic characteristics, in complete darkness.

From the ROLLEI chemistry delivery assortment were accomplished practice attempts with the following chemistry:

- Film developer:**
- ROLLEI LOW CONTRAST (RLC) for the pictorial photography.
 - ROLLEI HIGH SPEED (RHS) for obtaining of steeper Gradation (alienation effects)
 - ROLLEI HIGH CONTRAST (RHC) as document film for reproductions, letters or front titles etc.

Further product information about different developers can be found at www.gigabitfilm.de and www.spur-photo.com.

Stop bath: ROLLEI CITRIN (RCS) **prescribed**, water alone is not sufficient.

Fixing bath: ROLLEI FIX ACID (RXA) high speed fixing bath, like RXA, are to be set less concentrated (for example dilution 1+15 instead of 1+9)

Wetting agent: ROLLEI WETTING AGENT (RWA) super-concentrate is to be normally diluted 1+1,000. **With the ATP "V1" it must be worked with a diluted solution (e.g. 1+3,000).** With a 1+1,000 dilution, streaks can be formed, which are to be eliminated only with plentiful water and patience.

Recommendation: It was noticed, that the film spirals and developer tanks must be very clean. In no case remainder of silver and/or wetting agents may adhere! Therefore: A more thorough cleaning than otherwise usually, is strongly recommended!

Recommendation: Polyester films are inclined to rolling. Modern P.E.T. films replaces the traditional triacetate films ever more frequently. New experiences accompanies! A trick: Winding the finished dry film against the roll direction into a dry developer tank spiral. On the next day, the film should then lie flat.

Recommendation: With 35mm films, the glass clear carrier transports light into the film cartridge. Therefore, it would be wise, to use the first five picture frames, for a row of exposures.

With the use of other than ROLLEI established photo chemistries, it can come to reductions in quality, in addition, also may be to quality improvements.

<u>Manufacturing of film:</u>	35mm – 135-36	Art.-No. ATP2011
	135-30m	Art.-No. ATP2030

<u>Manufacturing of the developer:</u>		
ROLLEI LOW CONTRAST (RLC):	1 litre bottle	Art.-No. RLC11
	2 x 250 ml	Art.-No. RLC12